



Be a Water Leveler

Name _____ Date _____

Once you have demonstrated how water seeks its own level, answer the following questions.

Record your water data

Beginning depth of water in carton A _____ cm

Beginning volume in carton A _____ cc

(volume = _____ length x _____ width x _____ depth)

Beginning depth of water in carton B _____ cc

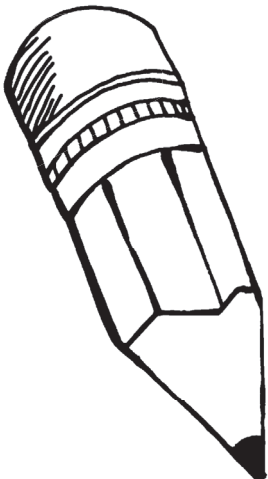
Beginning volume in carton B _____ cc

(volume = _____ length x _____ width x _____ depth)

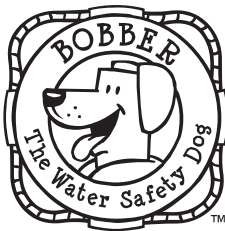
Difference in volume of water in carton A and B _____ cc

Ending volume in carton A _____ cc

Ending volume in carton B _____ cc



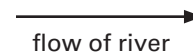
Write a three-paragraph essay describing the outcome of your experiment. Use the data you gathered in your essay. You may need extra paper to complete this assignment.



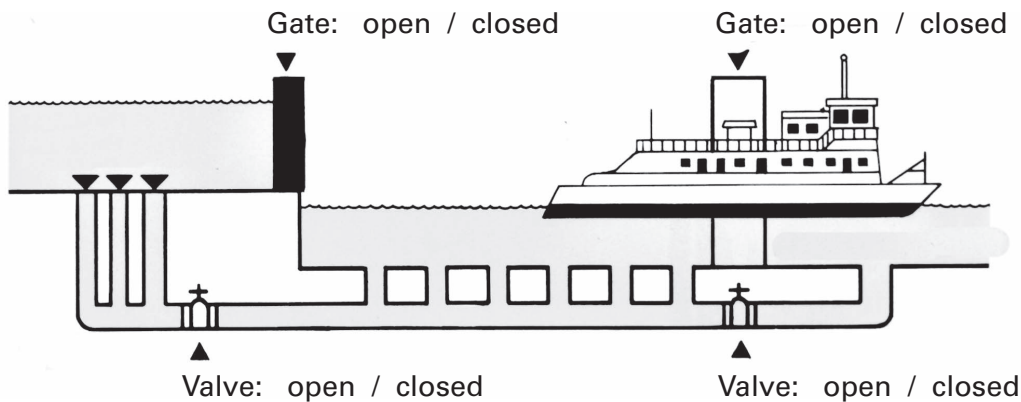
Get Ready

Have students play the virtual lock game with the U.S. Army Corps of Engineers' Bobber the Water Safety Dog. Go to www.bobber.info and choose **Lock Game**.

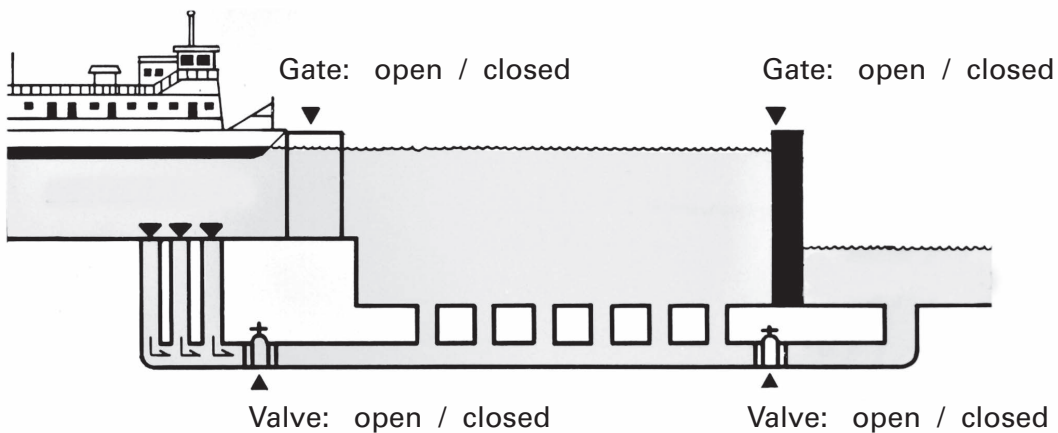
Number these illustrations in correct order and complete the labels by circling the words open or closed next to all gates and valves.



#



#



#

